



Connectez Avec Confiance !

**Solutions et Produits pour le Monde
de Demain et d'Aujourd'hui !**

Accès à nos experts techniques | Service Client 24/7 | Accompagnement

Access Point Indoor/ Outdoor.....	2-3
Access Point indoor.....	4
Access Point Outdoor.....	5-15
Management and network services.....	16-17
Antennas.....	18-19



Ruckus smartzone.....	20
Access Point indoor.....	21-24
Access Point Outdoor.....	25



Welder optical.....	26-28
---------------------	-------



Accessory optical fiber.....	29-30
Welder optical.....	31



Cable FO outdoor.....	32-34
Cable FO adss.....	35-36
Cabinets FO & ORS.....	37
Dispatcher FO.....	38
Boxes FO.....	39



Generators portable.....	40-41
Lighting tower hybrid.....	42
Tower of electric lighting.....	43-46
Pallet trucks manual.....	47
Pallet trucks, high lift.....	48

Material handling.....	53
Mobile weighing.....	54



Switch main.....	55
Switches aggregation.....	56
Access Switches.....	57-58
Switches, Industrial.....	59
Media converter.....	60
VOIP.....	61
Routers.....	62
Plug-in Modules.....	63



Switches aggregation.....	64-66
Access Switches.....	67-70



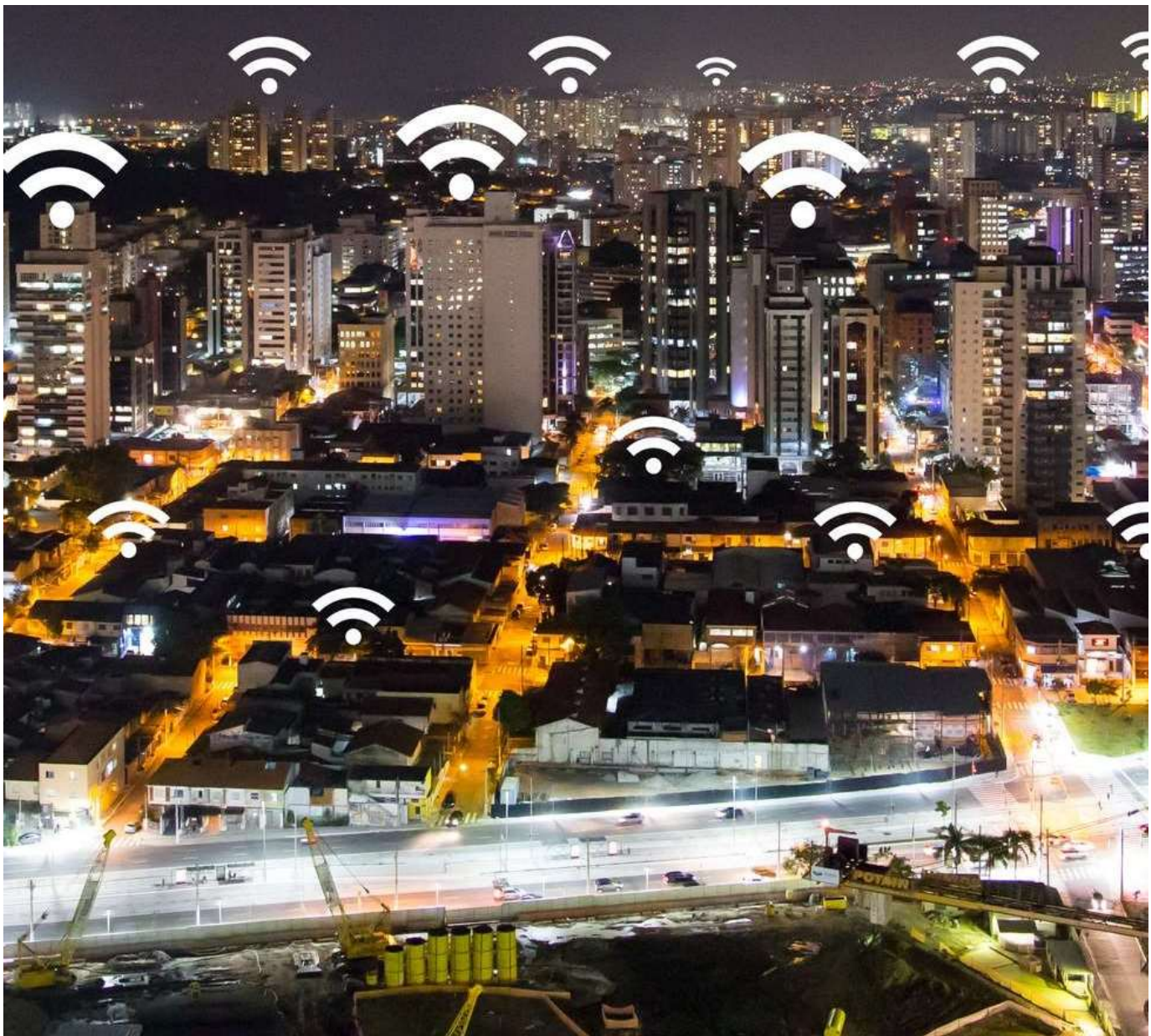
Test network multi-protocol.....	71-73
Test cable.....	74
Certification of copper.....	75
Certification I1& L2 FO.....	76
Accessories FO.....	77-78



Garters optical.....	79-80
----------------------	-------

P. S: This catalogue contains only part of our products

WIFI Indoor & Outdoor



Access Point Indoor/Outdoor



C1n/C1an Super WiFi CPE/AP

the ALTAI-C1N is a flexible device intended to improve the Wi-Fi connectivity using advanced technology to enhance the signal, to control the bandwidth and meet the needs of operators of services, while providing flexible installation options.

Signal processing patented, to improve radio performance in terms of line-of-sight (LOS) and non-line-of-sight (NLOS).

Support for multiple end-users isolated thanks to the control of the bandwidth per client/VAP.

Remote management by end-user, and association status client via a web interface.

Antennas high performance of the patch antenna polarized cross of $\pm 45^\circ$, optimizing performance in association with the series antennas Altai A8n.

Works both as a CPE (Customer Premises Equipment), and as a small Wi-fi access point for local coverage.



Mechanism of alignment to 8 levels with integrated LEDs for a quick installation, simple and powerful.

C1n/C1an Super WiFi CPE/AP

Signal processing patented, to improve radio performance in terms of line-of-sight (LOS) and non-line-of-sight (NLOS).

Support for multiple users isolated via the control of the width of a band-by-client/VAP.

Remote management by end-user, and association status client via a web interface.

Possibility of using antennas omni or sector-external high - performance option, optimizing performance in association with the series antennas Altai A8n.

Works both as a CPE (Customer Premises Equipment), and as a small Wi-fi access point for local coverage, ideal for use as a bridge point-to-point low-cost.

Mechanism of alignment to 8 levels, with integrated LED installation fast, simple and powerful.

The model C1xn+ operates in the 2.4 GHz frequency band, while the model C1xan operates in the 5-GHz frequency band.



Access Point Indoor/Outdoor

ALTAI
Super WiFi

C2s Dual-Band 2x2 AC WiFi Super AP



The access point dual-band 2x2 802.11 ac Altai C2s is designed for providers of services requiring high performance, carrier-class, wide coverage and high capacity, while remaining economical. Thanks to advances in technology, such as a RF design and high-quality filters, the technologies of band management and intelligent load balancing. The flexible architecture of the C2s supports different modes of management, including stand-alone, based on a controller or cloud-based with AltaiCare. In

addition, the zero configuration Altai allows non-technical users to simply plug in the Altai C2s on the WiFi network.

Concurrent dual-band dual frequency 2.4 GHz and 5 GHz.
2x2 MIMO for the 2.4 GHz radios (802.11 b/g/n) and 5 GHz (802.11 a/n/ac).

Coverage up to 50 % larger, which reduces the number of AP (points of access) necessary for a Wi-fi network.

In combination with the models A8-Ein (ac) or A3-Ei, the solution provides Wi-fi coverage of up to 3 km.

Self-management, based on a controller or cloud-based with AltaiCare.

AP (access point), carrier-class IP-55 for different applications.

Lightweight with lightning protection built-in.

Easy Installation and management via a web interface or cloud-based.

Multiple operating modes available : AP, bridge mode or CPE (Customer Equipment).

According to the PoE standard 802.3 at.

Access Point indoor



IX600 2X2 Wi-Fi 6 Access Point

Altai IX600, equipped with the latest Wi-Fi 6 (802.11 ax), is specially designed to offer connectivity highly reliable and consistent to mobile users and devices, IoT, and this, at the most affordable prices in the market.

With data rates of up to 1,774 Gbps, technology, patented Altai, and features Wi-Fi 6, such as OFDMA and MIMO. el, the IX600 has the capacity, coverage and reliability necessary to meet the challenges of deployments in indoor medium density.

Wi-Fi 6 dual-band offering an extensive cover at the most affordable prices in the market.

Use of technologies such as OFDMA and MU-MIMO to improve the efficiency and speed for multiple users. Other features, such as the modulation 1024-QAM, the BSS coloring and Target Wake Time, also help to optimise the performance of the IX600.

The IX600 offers data rates of up to 1.2 Gbps 5 GHz and 574 Mbps on 2.4 GHz, offering the possibility to connect up to 256 clients associated with them by radio.



IX500 Indoor, 2x2 802.11 ac Wave 2 AP

Signal processing patented, to improve radio performance in terms of line-of-sight (LOS) and non-line-of-sight (NLOS).

Support for multiple users isolated via the control of the width of

a band-by-client/VAP.

Remote management by end-user, and association status client via a web interface.

Possibility of using antennas omni or sector-external high - performance option, optimizing performance in association with the series antennas Altai A8n.

Works both as a CPE (Customer Premises Equipment), and as a small Wi-fi access point for local coverage, ideal for use as a bridge point-to-point low-cost.

The model C1xn+ operates in the 2.4 GHz frequency band, while the model C1xn operates in the 5-GHz frequency band.



Access Point outdoor



VX200 - CPE/AP Industrial



Altai VX200 is a CPE/AP industrial specifically designed to provide a Wi-Fi experience exceptional connectivity and highly reliable for the price the most affordable in the market.

The Altai VX200 supports the standards of industrial communication such as PROFINET. Its Suite of advanced mitigation of interference offers a significant reduction in interference in industrial environments that are difficult and noisy.

Thanks to its wide operating temperature range, and its design robust offering improved protection against surges, the discharge electrostatic (ESD) and vibration, the VX200 can be used in difficult conditions with high reliability.

It is ideally suited for installation on platforms AGV or AS/RS in factories, logistics centers and warehouses. As a CPE at high performance and the most affordable on the market, it is ideal for real-time monitoring devices, remote management, and the collection of data in a wide range of industrial environments.

Access Point outdoor

A8-Ein (ac) : base Station WiFi Super

The base station WiFi Super A8-Ein(ac) of Altai is a WiFi solution advanced, offering a coverage of 100 degrees. It is easy to install with an antenna MIMO built-in 8-element for a long and a performance NLOS optimal. It operates simultaneously in the bands of 2.4 GHz and 5 GHz, offering connectivity in the two bands and the links to the long-range up to 30 km in 5 GHz with an antenna dual polarization.

Horizontal beamwidth of 100 degrees in a built-in antenna 8 elements, with a MIMO 8x8 combined with the technology of smart antenna owner of Altai for uniform coverage scope.

Provides up to 5 times the range and 10 times the coverage area by report access points as a standard.

Up to 90 % of sites in the least the same coverage area.

Co-localization possible to 50 cm with antenna 3G/4G.

Capacity of up to 300 Mbps (access) more 867 Mbps (access/return to the model ac) / 300 Mbps (access/return to the model n) - by-station basis.



Base Station WiFi Super A8in (ac)

Horizontal beamwidth of 360 degrees in a built-in antenna to 8 items.

MIMO 8x8 associated with the smart-antenna technology specific to Altai for uniform coverage scope.

Offers up to 3 times the range and 10 times the coverage area compared to the access points as standard.

Use of up to 80 % of access points less compared to the systems Wi-fi standard for an even coverage area.

Possibility of co-location at 50 cm with antenna 3G/4G.

Capacity of up to 300 Mbps (access) more 867 Mbps (access/return to the model ac) / 300 Mbps (access/return to the model n) - by-station basis.

Quick and easy Installation with a bracket monopole for the radios and antennas.

Extended reach with a distance of uplink backhaul) ranging up to 30 km.

Technology AirFi Altai for capacity and efficiency by channel WiFi.



Access Point outdoor

A8-Ein (ac) : base Station WiFi Super

The base station WiFi Super A8-Ein(ac) of Altai is a WiFi solution advanced, offering a coverage of 100 degrees. It is easy to install with an antenna MIMO built-in 8-element for a long and a performance NLOS optimal. It operates simultaneously in the bands of 2.4 GHz and 5 GHz, offering connectivity in the two bands and the links to the long-range up to 30 km in 5 GHz with an antenna dual polarization.

Horizontal beamwidth of 100 degrees in a built-in antenna 8 elements, with a MIMO 8x8 combined with the technology of smart antenna owner of Altai for uniform coverage scope.

Provides up to 5 times the range and 10 times the coverage area by report access points as a standard.

Up to 90 % of sites in the least the same coverage area.

Co-localization possible to 50 cm with antenna 3G/4G.



Base Station WiFi Super A8in (ac)

Horizontal beamwidth of 360 degrees in a built-in antenna to 8 items.

MIMO 8x8 associated with the smart-antenna technology specific to Altai for uniform coverage scope.

Offers up to 3 times the range and 10 times the coverage area compared to the access points as standard.

Use of up to 80 % of access points less compared to the systems Wi-fi standard for an even coverage area.

Possibility of co-location at 50 cm with antenna 3G/4G.

Capacity of up to 300 Mbps (access) more 867 Mbps (access/return to the model ac) / 300 Mbps (access/return to the model n) - by-station basis.

Quick and easy Installation with a bracket monopole for the radios and antennas.

Extended reach with a distance of uplink backhaul) ranging up to 30 km.



Base Station WiFi Super A8n (ac)



The base station WiFi Super A8n (ac) of Altai is a WiFi solution advanced taking support 802.11 a/b/g/n/ac. With MIMO technology, 8x8 and smart-antenna technology Altai, it offers a wide range of coverage and exceptional performance in the absence of line-of-sight (NLOS). This base station operates simultaneously in the bands of 2.4 GHz and 5 GHz, offering an access connectivity in the two bands as well as links long range up to 30 km in 5 GHz.

MIMO 8x8 combined with the technology of smart antenna owner of Altai for uniform coverage range of high-quality.
The multiple antennas of the series A8n can be configured for a coverage that is optimized in terms of area, pattern and elevation.
Offers up to 3 times the range and 10 times the coverage area compared to the access points standard.
Co-localization possible to 50 cm with the sites of cellular 3G/4G on a single pole.
Capacity of up to 300 Mbps (access) more 867 Mbps (access/return to the model ac) / 300 Mbps (access/return to the model n) per base station.
Extended reach, with a distance of uplink (backhauling) ranging up to 30 km.

Altai A2 is an access point/extender outdoor 2x2 802.11 ac dual-band, rated IP 67, designed to be used as a point of access in environments with high density of users, or as a bridge point-to-point and point-to-multipoint offering a speed similar to a cable, all at a price very affordable on the market.

Featuring a RF design superior and high-quality filters, combined with the algorithm for mitigation of interference from Altai, Altai A2 offers an optimal capacity and excellent resistance to interference. It allows access to line-of-sight (LOS) up to 500 meters and a direct-line-of-sight (LOS) of up to 20 kilometers.

Access Point 802.11 b/g/n, professional-quality, rated IP-67, suitable for applications indoors and outdoors.
2 antenna ports external 2.4 GHz, offering a Wi-fi coverage of 90° to 360°.

Bridging point-to-point (PTP) and point-to-multipoint (PTMP) with antenna panel 5 GHz dual integrated tilt.

Several potential operating modes : access point, bridge, repeater, and CPE (equipment wireless client).

Flexible deployment Options such as the management mode stand-alone, based on a controller or cloud-based.

Lightweight and equipped with a lightning protection built-in.



Access Point/Wi-Fi bridge A2x

Designed for the outdoor areas of medium to high density, the Altai A2x offers a Wi-Fi experience exceptional connectivity and highly reliable at the most affordable prices in the market. The A2x incorporates patented technologies from Altai to expand coverage, improve capacity, reduce the interference and provide an ultra-fast speed. With a enclosure resistant to weather conditions noted and IP67 protection against voltage surges and vibration of industrial quality, the A2x is an ideal solution for difficult environmental conditions.

- MU-MIMO significantly improves the capacity for multi-user, and the dual radios offer data rates up to 867 Mbps on the 5 GHz band and 300 Mbps on the 2.4 GHz band.
- Use of omni-directional antennas with high gain or segmented for extended coverage.

- The function "AlwaysConnected" provides wireless connectivity redundant and a fast recovery to a 100% global network availability.
- Roaming in milliseconds.



Access Point outdoor

ALTAI
Super WiFi

Access Point dual-band A3-Ei





The access point dual-band Altai A3-Ei 3x3 MIMO 802.11 ac is designed to be used in systems Super WiFi Altai, providing coverage, high-capacity dual-band, dual-concurrent 2.4 and 5 GHz with a throughput of up to 1.75 Gbps. The model A3-Ei is rated IP 67 and can operate at a range of temperatures from -40°C to +60°C, which makes it an ideal solution for harsh environments such as warehouses, stadiums, etc

- High capacity 1.3 Gbps in the 5 GHz and 450 Mbps in 2.4 GHz
- Built-in 2.4 and 5 GHz 3x3 MIMO spatial polarized antennas
- 3x3 MIMO in 3 streams for both 2.4 GHz (802.11 b/g/n) and 5GHz (802.11 a/n/ac) radios
- IP-67 rated carrier grade 802.11 a/b/g/n/ac AP for outdoor applications
- Fill-in coverage area in challenging RF environment
- AltaiCare cloud-based zero configuration and secured AP management
- Multi-operating modes allowed: AP, bridge, repeater mode gold CPE
- 802.3 at and 802.2 af compliant PoE

Access Point outdoor



Access Point Wi-fi dual-band Altai AX600-S 2x2 802.11 ax

Designed for the outdoor areas of medium to high density, the Altai AX600-X offers a Wi-Fi experience exceptional connectivity and highly reliable at the most affordable prices in the market.

• Wi-Fi 6 for greater efficiency and speed in multi-user improved. Other features such as the modulation 1024-QAM, the staining BSS and the "Target Wake Time" also helps to optimize the performance. • MU-MIMO significantly improves the capacity for multi-user, and the dual radios offer data speeds of up to 1201 Mbps on the 5 GHz band and 574 Mbps on the band of 2.4 GHz. • Access Point dual-band quality operator noted IP-67, suitable for applications indoors and outdoors.



Access Point Wi-fi dual-band Altai AX600-X 2x2 802.11 ax

Designed for the outdoor areas of medium to high density, the Altai AX600-X offers a Wi-Fi experience exceptional connectivity and highly reliable at the most affordable prices in the market.

- Wi-Fi 6 improves the efficiency and speed multi-users. Other features such as the modulation 1024-QAM, the staining BSS and the "Target Wake Time" also helps to optimize the performance.
- The MU-MIMO significantly improves the capacity for multi-user, and the dual radios offer data rates of up to 1201 Mbps on the 5 GHz band and 574 Mbps on the 2.4 GHz band.
- The access point dual-band, carrier-class is rated IP-67, suitable for applications indoors and outdoors.



Access Point outdoor



Wi-fi access Point 802.11 ac Wave 2 CX200

The Altai CX200 is ideally suited for medium to high-density rentals like airports, container ports, convention centers, plazas, malls, warehouses, and stadiums. With next generation 802.11 ac Wave 2 technology, the CX200 can deliver unparalleled Wi-Fi experience and highly reliable connectivity at the market's most affordable price point.

- Ultra-fast speed - up to data rates of up to 867 Mbps on the 5 GHz band and 400 Mbps on the 2.4 GHz band. • The technology AirFi Altai improves the throughput of clients according to the strength of signal and data.
- Enclosure watertight and dust-resistant noted IP67 capable of withstanding harsh environments.
- Housing design compact and discreet, allowing the CX200 to blend in with any environment.
- Omni-directional antennas, or antennas optional high-gain omni-directional or sector-specific for extended coverage.
- Self-management-based or controller with AltaiGate, or management based on the cloud with AltaiCare.



Access Point Wi-fi dual-band Altai AX600-X 2x2 802.11 ax

Altai CX600, with the latest technology and Wi-Fi 6 (802.11 ax), is specifically designed to provide connectivity that is highly reliable and constant to mobile users and devices IoT in price the most affordable in the market.

- Wi-Fi 6 to improve the efficiency and speed multi-users. Other features such as the modulation 1024-QAM, the staining BSS and the "Target Wake Time" also help to optimise the performance of the CX600.
- Dual-band dual-concurrent - The CX600 provides a data rate maximum up to 1.2 Gbps 5 GHz and 574 Mbps on 2.4 GHz, enabling connectivity for up to 256 associated clients per radio.

Enclosure watertight and dust-resistant noted IP67 capable of withstanding for harsh environments.



Access Point outdoor



Point-to-point wireless (PTP) is designed for wireless links for backhaul.

The Altai B5 PTP is a bridge solution that is powerful with a radio and an antenna built-in 5 GHz, designed to link PTP high-speed and long-range. The series Altai B5 PTP consists of 5 models with different combinations of transmit power, antenna gain, and configuration, to meet different needs in terms of range and speed.

- Frequency band configurable 4.9 to 6.0 GHz.
- Possibility of distances operational for more than 80 km.
- High capacity - up to 280 Mbps of throughput.
- Innovative technology MIMO 2x2.
- Function upgrade of the ability to "Pay as you grow" (Pay as and to the extent of your growth)
- channel Width 5/10/20/40 MHz.
- Solution for backhaul plug & play single for the bindings in the line-of-sight (LOS) and non line-of-sight (NLOS).
- Gigabit Ethernet Port, and re-assign flexible binding ascending/descending.
- Support advanced quality of service, design reliable and rugged.



Wireless bridge B5 PTP link wireless demotion

- Frequency band configurable 4.9 to 6.0 GHz .

- Possibility of distances operational for more than 35 km away
- High capacity - up to 240 Mbps throughput
- Innovative technology MIMO 2x2 .
- Function upgrade of the ability to "Pay as you grow".
- Channel width 5/10/20/40 MHz .
- Solution for backhaul plug & play single for the bindings in the line-of-sight (LOS) and non line-of-sight (NLOS) .
- Gigabit Ethernet Port, and re-assign flexible binding ascending/descending.
- Support advanced quality of service, design reliable and rugged



Access Point outdoor



Point-to-point wireless B5

The Altai B5 PTP is a bridge solution that is powerful with a radio and an antenna built-in 5 GHz, designed to link PTP high-speed and long-range. The series Altai B5 PTP consists of 5 models with different combinations of transmit power, antenna gain, and configuration, to meet different needs in terms of range and speed.

- Frequency band configurable 4.9 to 6.0 GHz.
- Possibility of distances operational for more than 80 km.
- High capacity - up to 280 Mbps of throughput.
- Innovative technology MIMO 2x2.
- Function upgrade of the ability to "Pay as you grow" (Pay as and to the extent of your growth)
- channel Width 5/10/20/40 MHz.
- Solution for backhaul plug & play single for the bindings in the line-of-sight (LOS) and non line-of-sight (NLOS).
- Gigabit Ethernet Port, and re-assign flexible binding ascending/descending.
- Support advanced quality of service, design reliable and rugged.



Wireless bridge B5 PTP link wireless demotion

- Frequency band configurable 4.9 to 6.0 GHz .
- Possibility of distances operational for more than 35 km away
- High capacity - up to 240 Mbps throughput .
- Innovative technology MIMO 2x2 .
- Function upgrade of the ability to "Pay as you grow".
- Channel width 5/10/20/40 MHz .



- Solution for backhaul plug & play single for the bindings in the line-of-sight (LOS) and non line-of-sight (NLOS) .
- Gigabit Ethernet Port, and re-assign flexible binding ascending/descending.
- Support advanced quality of service, design reliable and rugged.



Access Point outdoor



Point-to-point wireless designed for wireless links for backhaul.

The Altai B5 PTP is a bridge solution that is powerful with a radio and an antenna built-in 5 GHz, designed to link PTP high-speed and long-range. The series Altai B5 PTP consists of 5 models with different combinations of transmit power, antenna gain, and configuration, to meet different needs in terms of range and speed.

- Frequency band configurable 4.9 to 6.0 GHz.
- Possibility of distances operational for more than 80 km.
- High capacity - up to 280 Mbps of throughput.
- Innovative technology MIMO 2x2.
- Function upgrade of the ability to "Pay as you grow" (Pay as and to the extent of your growth)
- channel Width 5/10/20/40 MHz.
- Solution for backhaul plug & play single for the bindings in the line-of-sight (LOS) and non line-of-sight (NLOS).
- Gigabit Ethernet Port, and re-assign flexible binding ascending/descending.



B5 is a wireless bridge PTMP designed for wireless links for backhaul

- Frequency band configurable 4.9 to 6.0 GHz .
- Possibility of distances operational for more than 35 km away
- High capacity - up to 240 Mbps throughput .
- Innovative technology MIMO 2x2 .
- Function upgrade of the ability to "Pay as you grow".
- Channel width 5/10/20/40 MHz .
- Solution for backhaul plug & play single for the bindings in the line-of-sight (LOS) and non line-of-sight (NLOS) .
- Gigabit Ethernet Port, and re-assign flexible binding ascending/descending.
- Support advanced quality of service, design reliable and rugged



Management and network services

AltaiCare

Designed for simplicity and ease of use, AltaiCare is a solution to network management, based on the cloud that offers a simple, secure, and economical for Providers of Internet Access-Wireless (WISPs) and enterprises to manage their Wi-fi networks.

In addition to network management, AltaiCare supports an architecture that is innovative, cloud-based and controller-to manage the access to the access points (AP), providing a secure control of the intake and the services on a WiFi network. It supports a full range of authentications based on the standard 802.1 x and captive portal for authentication, secure Web.

- The zero configuration allows a person who is non technical , simply unpack and plug in the access points (AP) to the Wi-fi network ; the AP will automatically obtain the configuration and firmware from AltaiCare.
- Thanks to the architecture of local failure of AltaiCare and the protocol CAPWAP management data going to the cloud are secured by SSL, while the data and control traffic remains local.
- Enables it managers of the companies to develop a quick, secure access to their internal network, as well as to provide hotspots for the guest access.
- The subscription model "Pay-as-you-grow" to AltaiCare leads to a reduction of the operating costs (OPEX).
- Advertising services which are based on the location of AltaiCare allow to generate extra income through advertising.



Platform management WLAN AltaiCare

AltaiCare is a new class of platform management WLAN affordable and versatile designed for small and medium-sized enterprises. Powered by an optimized version and virtualized the AltaiCare, it meets the challenges of network encountered during the deployment of Wi-Fi networks 50 points AP (access) or less.

- Supports up to 50 access points (AP), and 1000 client devices at an affordable cost.
- The interface of the Web-based configuration allows you to configure quickly the Wi-Fi network ; the access points Altai Super WiFi detect automatically AltaiGate.
- The features of intelligent access, such as the hotspot guest access, the connection via the social networks like Facebook and Google allow a quick configuration for secure access to the private network or a facility monetization services hotspot.
- Support the authentication of quality enterprise 802.1 x with any database authentication downstream such as RADIUS and Active Directory.



AltaiGate 200 Smart WLAN Controller

The AltaiGate 200 has been designed in view of the ease-of-use. It allows you to quickly configure a network Wi-Fi full via its interface web, making it easier to deploy in any layer 2/3 network.

This solution is ideal for companies of all sizes

looking for a Wi-Fi network, robust, secure, and self-optimized, easy-to-deploy and manage. The access points Super WiFi Altai connect automatically to the AltaiGate, allowing a deployment plug-and-play.

In addition, the AltaiGate 200 can handle up to 200 access points Super WiFi and 4 000 client devices from a single location.

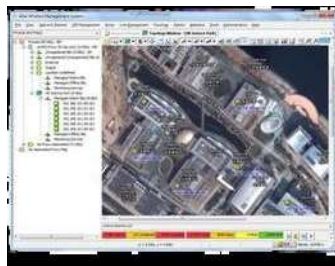
- The zero configuration allows a person who is non technical, simply unpack and plug in the access points (AP) to the Wi-fi network ; the AP will automatically obtain the configuration and firmware from AltaiCare.
- Thanks to the architecture of local failure of AltaiCare and the protocol CAPWAP management data going to the cloud are secured by SSL, while the data and control traffic remains local.
- Enables it managers of the companies to develop a quick, secure access to their internal network, as well as to provide hotspots for the guest access.
- The subscription model "Pay-as-you-grow" to AltaiCare leads to a reduction of the operating costs (OPEX).
- Advertising services which are based on the location of AltaiCare allow to generate extra income through advertising.



System wireless management Altai

The appliance AltaiCare is a new class of platform management WLAN affordable and versatile designed for small and medium-sized enterprises. Powered by an optimized version and virtualized the AltaiCare, it responds to the challenges of network encountered during the deployment of Wi-Fi networks of 50 access points (AP) or less.

- Supports up to 50 access points (AP), and 1000 client devices at an affordable cost.
- The interface of the Web-based configuration allows you to configure quickly the Wi-Fi network ; the access points Altai Super WiFi detect automatically AltaiGate.
- The features of intelligent access, such as the hotspot guest access, the connection via the social networks like Facebook and Google allow a quick configuration for secure access to the private network or a facility monetization services hotspot.
- Support the authentication of quality enterprise 802.1 x with any database authentication downstream such as RADIUS and Active Directory.



Antennas



**Omni-directional antenna Altai 2.4 GHz 5 dBi
connector N-Female**

- Frequency range : 2.4 - 2.5 GHz
- Gain : 5 ± 1 dBi • Polarisation : Horizontal and vertical
- beam Width horizontal : 360° • beam Width vertical : 15°
- VSWR : $<1,8 \pm 0,2$
- Impedance : 50 ohm
- Power handling : 50 W
- operating Temperature : -20°C to $+60^\circ\text{C}$
- Humidity : 95% @ 55°C
- Dimensions : 154 x \varnothing 13 mm
- Colour of the radome : Light grey-white
- Weight : 0,013 kg
- Connector : SMA male polarization reversed (SMA-RP)



Omni-directional antenna Altai 2.4 GHz 8 dBi

Frequency range : 2.4 - 2.5 GHz
 Gain : 5 ± 1 dBi
 Polarization : Horizontal and vertical
 Beam width horizontal : 360°
 Beam width vertical : 15°
 VSWR : $<1,8 \pm 0,2$
 Impedance : 50 Ω
 Power handling : 50 W
 Temperature : -20°C to $+60^\circ\text{C}$
 Humidity : 95% @ 55°C
 Dimensions : 154 x \varnothing 13 mm
 Color of the radome : Gray-white
 Weight : 0,013 kg
 Connector : SMA male polarization reversed (SMA-RP)



Antennas

ALTAI
Super WiFi

Altai 2.4 G 8dBi Omni Antenna N-female

Frequency range : 2.4 - 2.5 GHz
 Gain : 8 dBi
 Polarization : Linear, Vertical
 beam Width horizontal : 360° (-3 dB)
 beamwidth vertical : 15 (-3 dB)
 down-Tilt : 0°
 VSWR : 2 (max)
 Impedance : 50 Ω
 Power handling : 20 W (continuous)
 Temperature : -40°C to $+80^\circ\text{C}$
 Humidity : 95 % at 55°C ,
 wind force : Up to 216 km/h (134 mph)
 Color of the radome : Gray



Material radome : fiberglass, UV resistant
Weight : 340 g
Dimensions : 80 x 78 x 520 mm
Connector : N-female
mounting Type : mounting on pole or wall
Diameter of the post : Ø51 to 63 mm (Ø2 2.5-inch)



Omni-directional antenna Altai 2.4 GHz 8 dBi connector N-Female

Frequency range of 2.4 ~ 2.483 GHz and 5.15 ~ 5.825 GHz
Gain : 3 dBi
Polarization : Linear, Vertical
beam Width horizontal : 360°
VSWR : 2 (max)
Impedance : 50 Ω
Power handling : 1 W
Temperature : -20 °C to +60 °C
Colour of the radome : Black
Material radome : TPEE
Weight : 10 g
Dimensions : 136 x Ø9,35 mm
Connector : RP-SMA





Ruckus SmartZone



Network controllers RUCKUS SmartZone simplify the management of switches, wired and wireless access points, responding to the needs of business networks and offers from network as a service (NaaS) based on a private cloud. These controllers, whether they are physical or virtual, provide a unified interface for the configuration of the network, the monitoring, the provision of services, troubleshooting and security. They allow directors, even those who do not have advanced skills in networks, to effectively manage the day to day tasks, solve connectivity issues and set policies to users and applications, to the end without a thread in the heart of the network.



Access Point indoor



Access Point R770

wireless connections speed with reduced latency and increased capacity are at the heart of the Wi-Fi 7, providing rich user experiences and taking care of new connected devices advanced and demanding applications. The RUCKUS R770 is the first point of access to enterprise-class support Wi-Fi 7, offering advanced connectivity. This implementation is improved by the patented RUCKUS BeamFlex+ for optimized performance of the network.

RUCKUS BeamFlex+ is present on the three stripes, greatly improving the speed and scope. Modulation.

4K QAM channels and 320 MHz to derive the full benefits of spectrum in the 6 GHz and offer an unprecedented rate.

The Ethernet port 10-Gbps, eliminating the bottleneck in the backhaul.

The management of the radio resource controlled by the AI simplifies the support and improves the performance of the network.

The coordination of automated frequency (AFC) strengthens the power of the signal and the scope by allowing the use of the method of standard power (SP) to 6 GHz.

The operation Multi-Link (MLO) improves the reliability in transmitting data on multiple links to avoid interruptions.

A better resilience of the Wi-Fi through the classification automated incident driven by the AI and the steps of remediation recommended.

Improvements to the Wi-Fi 7 RUCKUS, notably the implementation of the network time sensitive (TSN), offer the latency deterministic necessary for applications.

A new set of QoS features for Wi-Fi 7 to improve the experience of user in various scenarios.



Access Point R560

The RUCKUS R560 is a wireless access point high performance designed for indoor environments demanding. It supports standard Wi-Fi 6, providing industry-leading performance with increased bandwidth. The smart-antenna technology BeamFlex+ maximizes signal coverage and network capacity. The backhaul to the wired multi-gigabit eliminates the bottlenecks bottleneck capacity backhaul. The patented technology ChannelFly reduces the interference, while the mesh network 6 GHz provides connectivity reliable. This access point converge also supports the technologies of IoT and provides options for flexible management. In addition, it incorporates advanced security features with the standard WPA3.

The RUCKUS R560 offers performance of the foreground with the added support of the latest standard of Wi-Fi 6E. It takes advantage of the band 6 GHz via three radio stations dedicated to a maximum aggregate of 4.7 Gbps, improving the performance of devices by allowing more connections simultaneously.

His smart-antenna technology BeamFlex+ patented RUCKUS ensures greater speed, fewer errors, and an instant delivery of the band - width.



Access Point indoor



Access Point RUCKUS R760

The RUCKUS R760 is an access point Wi-Fi 6E tri-band, high-capacity designed to meet the growing demand of Wi-Fi connectivity, faster and more efficient. It operates to 6 GHz with three radio stations dedicated and supports 12 spatial streams to deliver a flow rate of combined data from 8.35 Gb/s. This solution allows to manage effectively up to 1 536 customer connections, thus providing a better coverage and improved performance in environments ultra-dense. In addition, the R760 incorporates IoT with Zigbee/BLE, and supports wireless standards beyond the Wi-Fi thanks to the following IoT RUCKUS. This access point is ideal for large businesses, public places and demanding environments.

Industry-leading performance in the industry : Based on the latest standard of Wi-Fi 6E, he takes advantage of the band 6 GHz with three radio stations dedicated to it. This improves the performance of devices, allowing more simultaneous connections, with 12 spatial streams.

Ultra-high density : Provides an exceptional experience for end-users in the stadiums, large public spaces, convention centers, and auditoriums, school, thanks to the technology of Ultra-High-Density RUCKUS®. The technology OFDMA optimizes the use of the channels between the clients, increasing the overall capacity of the Wi-Fi.



Access Point R750

The RUCKUS R560 is a wireless access point high performance designed for

indoor environments demanding. It supports standard Wi-Fi 6, providing industry-leading performance with increased bandwidth. The smart-antenna technology BeamFlex+ maximizes signal coverage and network capacity. The backhaul to the wired multi-gigabit eliminates the bottlenecks bottleneck capacity backhaul. The patented technology ChannelFly reduces the interference, while the mesh network 6 GHz provides connectivity reliable. This access point converge also supports the technologies of IoT and provides options for flexible management. In addition, it incorporates advanced security features with the standard WPA3.

The RUCKUS R560 offers performance of the foreground with the added support of the latest standard of Wi-Fi 6E. It takes advantage of the band 6 GHz via three radio stations dedicated to a maximum aggregate of 4.7 Gbps, improving the performance of devices by allowing more connections simultaneously.

His smart-antenna technology BeamFlex+ patented RUCKUS ensures greater speed, fewer errors, and an instant delivery of the band - width. This technology maximizes the signal coverage, throughput and capacity of the network, while increasing the gains of diversity, MIMO, and in maximizing the potential of spatial multiplexing at a lower cost.



Access Point indoor



Access Point RUCKUS H550

The locations of small size can do in the face of important requirements in the field of wireless infrastructure. Whether working from a small office or by connecting to a public hotspot, users often have access to the same content and applications to high speed they would consume elsewhere. And they are waiting for a strong connection and reliable.

How can you provide without breaking the bank ? The access point inside RUKCUS® R350 Wi-Fi 6, ready for the IoT, provides wireless connectivity 802.11 ax combined with all the technology patented by RUCKUS for the optimization of performance and reduction of interference that can be found in our access points, top of the range. Get performance Wi-Fi 6 in a housing, designed for small venues, with an affordable price to match.



Access Point R350

Small sites may be facing significant demands on their wireless infrastructure. Whether you're working in a small office or that you connect to a public hotspot, users often need access to the same bandwidth-intensive applications and the same content that they would use elsewhere. And they expect a strong connection and reliable.

How can you provide without emptying your bank account ? The point indoor access RUCKUS® R350 Wi-Fi 6, ready for IoT (Internet of things), provides wireless connectivity 802.11 ax combined with all the technology patented RUCKUS for the optimization of performance and reduction of interference that can be found in our access points, top of the range.



Enjoy performance Wi-Fi 6 in a package designed for small venues, with a price tag for the same.



Access Point Indoor



Access Point H350

The access point and gateway IoT surface mounted RUCKUS H350 is a solution that is versatile and designed for the structures to multi-unit housing, such as hotels and apartment buildings. It offers Wi-Fi connectivity of high quality with the standard Wi-Fi 6 (802.11 ax), of the Gigabit Ethernet ports for wired devices, a jack - in-charge of the IoT with Zigbee and Bluetooth Low Energy, all in a sleek design and discreet. This affordable solution that meets the needs of connectivity complexes of these environments while providing an excellent customer experience.



Access Point inside H550

The indoor access points RUCKUS H550 is a solution of Wi-Fi connectivity for high-quality designed for indoor environments demanding, such as hotels and apartment buildings. It offers fast and reliable connectivity through the standard Wi-Fi 6 (802.11 ax) and has Gigabit Ethernet ports to connect wired devices. In addition, it supports the technologies IoT such as Zigbee and Bluetooth Low Energy. Its discreet design and its performance are exceptional are an ideal solution for indoor environments demanding.



Access Point outdoor



Access Point T750

The external access point RUCKUS T750 is a solution of Wi-Fi connectivity designed for outdoor environments demanding. It supports standard Wi-Fi 6 and offers fast and reliable connectivity thanks to its smart antennas BeamFlex+. It is suitable for public spaces, the campus, parks, and provides connectivity IoT via Bluetooth and Zigbee. The T750 is robust and weather-resistant, suitable for outdoor use. It addresses a variety of needs, public access to the Internet to the connectivity of the security cameras and wireless applications IoT.



Access Point inside T350

The series RUCKUS T350 Wi-Fi 6 is a family of outdoor access points designed to meet a variety of needs outside. It works perfectly environments outdoor public to high-density such as airports, convention centers, plazas, malls, smart cities, and other dense urban. This series offers models with omni-directional antennas, or antennas directional, high gain, as well as patented technologies to optimize the antenna and reduce the interference, ensuring performance Wi-Fi 6 first-order for all connected devices. In addition, the access points of the series T350 are easy to install thanks to their lightweight and not bulky, and they are resistant to environments outside difficult.



Welding of fiber optic high definition in alignment with hearts

Welder T-72C+ is the new welder 3-axis ultra-fast and compact Sumitomo. It provides unmatched performance and you will greatly increase your productivity to deploy a fiber-optic network.

Features:

- Welding speed is unmatched : solder 4 s-mode SMF Quick
- Double oven ultra-fast (9 s)
- Loss of welding very low
- Accept cuts up to 6°
- automatic Recognition of all the fibres of the market - compact and Lightweight : 2.2 kg with battery
- Ergonomic : large touch-screen display enhanced with LCD 5 "
- Great battery life : 300 splices
- demo Videos of the integrated
- life of the electrodes : 6000 electric arcs
- Wi-Fi Connectivity and update via a Smartphone app



Welding by melting heart

In order to meet a growing demand in the market for a welder , heart to heart, reliable, fast and economic, Sumitomo has developed the welder T-55.

Features:

- Alignment 3 axes heart to heart
- Microscopes x520
- touch screen Interface (identical to the welder T-71C+)
- welding Speed in 7s-mode fast
- Speed of heating of the oven in 20s
- transport case with work tray removable
- Lightweight and compact
- battery life : approximately 230 cycles of splice & heating oven
- Compact and lightweight : 1.9 kg



Welder optical



Welding of fiber optic high definition in alignment with hearts

Welder T-72C+ is the new welder 3-axis ultra-fast and compact Sumitomo. It provides unmatched performance and you will

greatly increase your productivity to deploy a fiber-optic network.

Features:

- Welding speed is unmatched : solder 4 s-mode SMF Quick
- Double oven ultra-fast (9 s)
- Loss of welding very low
- Accept cuts up to 6°
- automatic Recognition of all the fibres of the market -
- compact and Lightweight : 2.2 kg with battery
- Ergonomic : large touch-screen display enhanced with LCD 5 "
- Great battery life : 300 splices
- demo Videos of the integrated
- life of the electrodes : 6000 electric arcs
- Wi-Fi Connectivity and update via a Smartphone app



Welding by melting heart

In order to meet a growing demand in the market for a welder , heart to heart, reliable, fast and economic, Sumitomo has developed the welder T-55.

Features:

- Alignment 3 axes heart to heart
- Microscopes x520
- touch screen Interface (identical to the welder T-71C+)
- welding Speed in 7s-mode fast
- Speed of heating of the oven in 20s
- transport case with work tray removable
- Lightweight and compact
- battery life : approximately 230 cycles of splice & heating oven
- Compact and lightweight : 1.9 kg



Active optical fiber

Welding by fusion to active alignment of the sheath

The new welder T-400S has been designed to facilitate the connection of the LAN clients & FTTH in all circumstances : dusty environment, weld on basket or in a sheath technique.

Its technology alignment on 3 axes allows for very good quality weld. Its great battery life, and speed give excellent results for the connection of fibre optic cables on the network. Its lightness allows for great comfort for the transport and use around the neck. The battery BU-15 it gives an autonomy of a work of 200 splices. The welding speed is average of 6s in automatic mode.

It should be noted that the accuracy of microscopes, magnification x200, does not allow the welder to analyze the cores, where the term welder " sheath-to-sheath ". The detection of defects on the heart (eccentricity, impact, dust,) therefore it is not possible.



features :

- Alignment on 3 axes
- Microscope x200 (sleeve to sleeve)
- Autonomy of 200 splices
- Welding speed 6s auto mode
- Programs to fibre G652D and G657A/A1/A2
- Weight 1.3 kg with battery
- Tether strap around the neck
- Protection IP51

Welding by fusion to active alignment elite sheath

Welder by merger to active alignment elite of the sheath is a equipment of leading-edge designed to merge optically optical fibres with an accuracy of exceptional. It uses a method of active alignment of the outer sheath of the fibers to ensure superior quality welds. This welder is ideal for applications requiring maximum performance and reliability in the field of connectivity fiber optics.

NanoTune™ AI technology NanoTune™ AI improves the accuracy and efficiency of splicing optical fibers, regardless of the conditions of functioning and competence of the user.

Analysis of the warm heart : The T-502S provides an accurate estimate of the losses in analyzing the image of the fiber

Sensing fiber type MMF and SMF : The T-502S is the first welding alignment sleeve active to introduce a function of detection of the types of fibers MMF and SMF This ensures the use of the program splice the correct function of the fiber type.



Accessory optical fiber

Tool Kit FTTH KFH-12/KFH-63 D

The "Suitcase tooling Komchine KFH-12/KFH-63 D FTTH Tool Kit" is a set of tools designed for the installation, maintenance, and repair of connections fibre in deployments FTTH (Fiber to the Home). This kit includes tools such as a cup-fiber, cable stripper fiber, a cliveuse fiber, a welder, fiber, meter, optical power, a viewer of defects in fiber, a tester continuity, glue, shrink sleeves, a tool for cleaning the connectors, and a storage box. It is intended for technicians working in the field of fiber optics to ensure reliable connections and high quality. For more detailed information on the use of this kit, it is recommended that the user refer to the user manual of the manufacturer.

features:

- easy to wear
- drop test 5m
- complete tools
- large capacity,
- strong performance

Test Kit-loss optical fiber KLT-12/KLT-15D

The "Suitcase tooling Komchine KLT-12/KLT-15D Fiber Optic Loss Test Kit" is a set of tools essential to perform tests of optical loss in fiber networks. It consists of a light source optical (KLT-12) to generate an optical signal, a puissanceètre optical (KLT-15D) to measure the signal power adapters, optical patch cords, fiber optic cable of testing, cleaning supplies, and a carrying case. This kit is used by technicians and engineers to assess the quality of transmission in fiber optic networks by measuring the loss of signal.

- easy to wear
- drop test 5m
- complete tools
- large capacity,
- strong performance

Accessory optical fiber

Kit inspection and cleaning of fiber KIC-05 I/KIC-05 D

The "Suitcase tooling Komchine KIC-05/KIC-05D Fiber Inspection & Cleaning Kit" is a set of tools designed for the inspection and cleaning of components in optical networks optical fiber. It includes a microscope control optical (KIC-05) for the visual inspection of fiber end-faces, of endoscopes (KIC-05D) to explore areas that are difficult to access, tools for cleaning the optical connectors, accessories cleaning, and a carrying case.

features:

- easy to wear
- drop test 5m
- complete tools
- large capacity,
- strong performance

Tool kit universal KFS-40

Capacity 35 tools
drop Test 2m
Design in layers 3 Couches
Test of rupture 5kg/70cm
Test press 18 kg

Welder optical

Welder fusion fiber optic trunk

This welding machine is very suitable for welding applications, such as the electronics industry, machine tools, and boat building. The rod guide tube is designed with specific applications and can be used with the help of a welding machine.

Welder fusion ftx portable

It is a machine used to merge the optical fibres, often in the context of work of telecommunication, to ensure connections of high - quality. This machine is equipped with 4 engines and a support alignment 3-

Cable FO outdoor

Optical fiber cable loose outdoor

72 FO

144 FO

288 FO

Discover the excellence of connectivity in the great outdoors with our range of fiber optic cables loose outdoor. Designed to withstand the weather and for demanding environments, our cables offer a performance exceptional, unparalleled reliability and simplified installation. Whether for industrial projects, networks, telecommunications or applications of security, our cables are your ultimate choice. Go for connectivity, robust and fast that pushes the boundaries, and make sure you think your network is always at the cutting edge of technology.

Cable FO outdoor

Optical fiber cable micro outdoor

04 FO

06 FO

12 FO

24 FO

48 FO

72 FO

144 FO

288 FO

Explore connectivity without compromise with our selection of cables, fiber optical Indoor LSZH. Specifically designed for indoor environments, these cables provide exceptional performance while respecting the standards security LSZH (Low Smoke Zero Halogen). Enjoy a transmission of data fast and stable, making it ideal for enterprise networks, centres of data, and residential applications in demanding. With easy installation and long-lasting durability, our cables Indoor LSZH are the perfect solution to ensure optimal connectivity wherever you are.

Opt for the excellence in the field of fiber optic cables for indoor and make sure you that your network meets all your connectivity requirements for the interior.

Cable FO outdoor

Optical fiber cable outdoor facade

01 FO

04 FO

06 FO

12 FO

24 FO

48 FO

Discover a perfect blend of aesthetics and performance with our range of fiber optic cables for outdoor facade. These cables are specially designed for integrate harmoniously into the architecture, while providing reliable connectivity in outside. With an outer sheath of weather-resistant, they provide a optimal protection against the elements, while ensuring that the data rates are high. Whether you're engaged in urban development projects, business or residential, our fiber optic cables outdoor facade are the ideal solution for connectivity high-performance without compromising the aesthetics. Opt for the quality sees and feels, and transform your network with cables designed for impress.

Cable FO adss

Optical fiber cable Indoor LSZH

01 FO

04 FO

06 FO

12 FO

24 FO

48 FO

Explore connectivity without compromise with our selection of fiber cables optical Indoor LSZH. Specifically designed for indoor environments, these cables provide exceptional performance while complying with the standards of security LSZH (Low Smoke Zero Halogen). Enjoy data transmission fast and stable, making it ideal for enterprise networks, data centers, and the residential applications demanding. With easy installation and durability any event, our cables Indoor LSZH are the perfect solution to ensure a connectivity optimum wherever you are. Opt for the excellence of cables fiber optic indoor and make sure that your network meets all your requirements connectivity inner.

Cable FO adss

Optical fiber cable ADSS with accessories

12 FO

24 FO

48 FO

72 FO

144 FO

288 FO

Redefine your infrastructure with our fiber optic cables ADSS, a solution unsurpassed for connectivity of external scalable. Designed for installation without hassle and an easily scalable, these backbone cables are the future of the modern networks. Whether you are developing networks of telecommunications extended, projects of urban development, or infrastructure of the company scalable, our cables ADSS offer a flexible response to your needs in bandwidth. Opt for unmatched performance, outstanding durability, and a constant adaptability to new technologies. Transform your network today it meets the requirements of tomorrow.

Cabinets FO & ORS

Cabinet 19"

12 U

24 FO

48 FO

SRO Single-And Double-Word

15U S 23U S 2x2 8uS 2* 32 uS 15U D 23U D 2* 28 uD 2* 32 uD

Dispatcher FO

Repartiteur modular optical

24/12 24/24 72/72 32 128 1/32 128 1/64

Splitter FO

1/2

1/4

1/8

1/16

1/32

1/64

Boxes FO

Boxes and junctions

12 FO

24 FO

36 FO

48 FO

72 FO

288 FO

Boxes connecting clients

24 CLT

72 CLT

24 FCD

36 FCD

48 FCD

72 FCD

Generators portable

Generator PX5000

Generator WX6200

Generators portable

Group électrogène WX3200

Group électrogène PX8000

Lighting tower hybrid

Tower lighting Cube hybrid

construction entertainment ecological Rental

Tower light Cube

construction entertainment ecological Rental

Tower of electric lighting

Tower lighting V20 hyper

construction entertainment ecological Rental

Tower lighting Vmax

construction entertainment ecological Rental

Lighting tower electric

Tower lighting Cube next

VT - Solar Hydro

Lighting tower electric

Tower lighting Cube next

VT - Solar Hydro

construction entertainment ecological Rental

Lighting tower electric

Tower lighting Cube next

construction entertainment ecological Rental

VT - Solar Hydro

construction

entertainment

ecological

Rental

Pallet trucks manual

GS25

GS EVO 25S4

Pallet trucks, high lift

HX10M

HX10E 25S4

Pallet Galv/Stainless Steel

Agile

Agile EVO

Pallet Galv/Stainless Steel

GS EVO Galv 25S4

GS/P 25S4

Pallet jacks, electric

CX 12

EX18L

Stackers semi-electric

CX 12

TX 10/09

Material handling

LP12

OP

Mobile weighing

Forks with weighing system

GS/P 25S4

Switch main

MTS 9000

Reliability within the network

40 G Switch Main

High port density

VSS

L3/L3 & rich
safety features

GS/P 25S4

Reliability within the network

40 G Switch Main

High port density

VSS

L3/L3 & rich
safety features

Switches aggregation

MTS 10080 Managed 10G/40G

High Performance, Simple Configuration

VSS

Centre of data

40G/100G

Energy saving

Administration of networks

MTS 10080

High Performance, Simple Configuration

VSS

Centre of data

40G/100G

Energy saving

Administration of networks

Access Switches

MTS 1728 Empliable

High Performance

Rich in features
I2/L3

features
advanced
network security

VSS

POE

Administration of networks

MTS 170

High Performance

Rich in features
I2/L3

features
advanced
network security

VSS

POE

Administration of networks

Access Switches

MTS 150-2402

High Performance

Rich in features
I2/L3

features
advanced
network security

VSS

POE

Administration of networks

MTS 150-1000

High Performance

Rich in features
I2/L3

features
advanced
network security

VSS

POE

Administration of networks

Switches, Industrial

ISM30

Wide Range of
Températures

Rich in features
12/L3

Self-repair
< 50 ms

MTBF
500 KH

IP40

SNMP

ISM20

Wide Range of
Températures

Rich in features
12/L3

Self-repair
< 50 ms

MTBF
500 KH

IP40

SNMP

Media converter

Converter Media Industrial

Wide Range of
Températures

POE

MTBF
500 KH

IP40

Energy saving

Converter Ethernet

Wide Range of
Températures

POE

MTBF
500 KH

IP40

Energy saving

VOIP

P2S7900

High Performance

Rich in features
I2/L3

features
advanced
network security

VPN

SNMP

P2S8400

High Performance

Rich in features
I2/L3

features
advanced
network security

VPN

SNMP

Routers

P2S7900

High Performance

Rich in features
I2/L3

VPN

LTE modem
built-in

WI-fi

Management of networks

MI-P

LTE modem
built-in

VPN

Self-repair

POE

IP40

Wide Range of
Températures

SNMP
TR069

Plug-in Modules

SFP Modules

Main features:

- Module QSFP28 hot-pluggable compliant with MSA standard
- data-Rate 100GE (for other protocols 100G, please consult us)
- LC connector (except QSFP28-100G-8M)
- Support DDM compliant to SFF 8472 Digital Diagnostic Monitor
- Models range from normal temperature : 0°C to 70°C
- RoHS compliant

SFP28 100G, 100GBASE-SR4, MPO/MPT

QSFP28 100G, 100GBASE-LR4, LC/DDM

QSFP28 100G, 100GBASE-20 KM, LC/DDM

QSFP28 100G, 100GBASE-FR4, LC/DDM

SFP28 100G, 100GBASE-LR, LC/DDM

Switches aggregation

Series S2995G

The series S2995G is a popular solution for the level of aggregation, and access optical networks in the business and telecom operators.

The series includes models with three different versions of the capacity of ports : designed to be used as L2/L3 aggregation SNR-S2995G-24FX, with 24-port GE (SFP 8 Combo) and 4 1/10GE SFP+ switch optical ports high-density (48 1GE SFP, 4 1/10GE SFP+) and compact model SNR-S2995G-12FX equipped with 12 1GE (SFP 4 combo) and 4-port 1/10GE SFP+.

The combination of optical interfaces and copper uplink ports SFP+ 1/10GE and features L2 and L3 is a switch of the series S2995G, a perfect solution for a wide range of tasks.

Series S3850G

The series S3850G is a productive solution for the aggregation L3. This series is different from the S2995G in dual core processor and a large size of tables L3 - up to 13 000 roads, and up to 4 000 records ARP. Switches of this product are equipped with 4 Uplink ports 1/10GE, 16-port SFP 1GE and 8 Combo ports 1GE to suit a wide variety of applications.

The combination of optical interfaces and copper uplink ports SFP+ 1/10GE, functionality, L2 and L3 are the switches of the series S3850G are a perfect solution for a wide range of tâches. De more, the switches of the series S2995G have a CLI, NFS, and SNMP MIB typical that facilitate the introduction.

Switches aggregation

S2990X-24FQ

The switch L2 all-optical SNR-S2990X-24FQ is equipped with 24-port 1/10GE SFP+ and 2-port 40GE per mxl+. The switch is characterized by performance, features and reliability, that is why it is considered as a perfect product solution for channel bonding lodge for the telecom operators and connections between servers/data storage systems (DSS) in the data processing centres. Power supply AC/DC protected, support stacking, protocols, LACP, ERPS can be used to build networks that are fault tolerant based on SNR-S2990X-24FQ with a time of convergence to a minimum.

S300X-24FQ

SNR-S300X-24FQ is a switch 10/40GE stacked of new generation, featuring a hardware architecture of edge, a wide variety of features L2 and L3. The switch is designed for application-level aggregation/core. A unique combination of interfaces : 8 port GE copper, 24 1/10GE SFP+ and 2 40GE per mxl+, allows you to use the equipment to solve a wide range of tasks. The stacking is performed via standard interfaces 40GE per mxl+ and does not require the purchase of additional cards. The ASIC Broadcom modern allows simultaneous operation of all of the interfaces at full speed with a capacity total of 656 Gbps.

Switches aggregation

S7550Y-48C

The switch L3/MPLS of the series NFS-S7550Y-48C is a device high performance designed for application to a base-level/aggregate, or as a switch TOR in the data centers. The switches in this series have up to 48 ports of 10/25GE SFP25 and 6-port 40/100GE QSFP25. Switching unlocked Matrix allows the simultaneous operation of all of the interfaces at full speed with a total capacity of 3352 Gbps. The SNR-S7550Y-48C ensures a high level of fault tolerance through the unit modular power supply and support for Protocols booking L2/L3.

S4650X-48FQ

SNR-S4650X-48FQ is a high performance new generation L3/MPLS-switch. The model is fitted with 48/10GE SFP+ports and 6 40GE per mxl+ ports, the switching matrix is characterized by the total capacity of up to 1440 Gbps. SNR-S4650 provides for high level

of fault-tolerance due to the modular power units and support for Reservation Protocols L2/L3.

Access Switches

S2989G

SNR-S5210G — switches to connect the networks to end-users, telecom operators and enterprise networks. The switches of this series are equipped with uplink ports SFP+ 1/10GE, 24 RJ45 ports 1GE and are considered a cost-effective solution to create a Gigabit access with an uplink 10GE.

S5210G

SNR-S5210G — switches to connect the networks of end-users, telecom operators and enterprise networks. The switches in this series are equipped with uplink ports SFP+ 1/10GE, 24 RJ45 ports 1GE and are considered a cost-effective solution to create a Gigabit access with an uplink 10GE.

Series S2982G

The switches of the series S2982G are a reliable and functional to organize the access Gigabit Ethernet in networks of telecom operators, enterprise network and support all the required features.

In addition, some models support standards : PoE 802.3 af and PoE+ 802.3 at. The process PoE reduces costs

of ownership and facilitates the maintenance of the network by feeding the points Wi-Fi internet access, IP phone/visual

Access Switches

Series S2985G

The switches of the series S2985G are considered to be a reliable and functional to organize the access to Gigabit Ethernet in the networks of telecom operators and networks business. The series supports all the features required to build secure networks and fault-tolerant ensure the integrity of your investment and high-performance

Series S2995G

Series S2995G — Switches L3 to connect end-users to networks of telecom operators and enterprises networks. This series of switches is equipped with 24/48 10/100/1000base-t and 4-port binding rising 1/10GE SFP+. This is why they are perfectly adapted to the organization of high-performance network.

Series S2962-24T

The series includes a switch SNR-S2962-24T. The switch is equipped with Downlink ports Fast Ethernet + Gigabit Ethernet Ports and uplink Gigabit Ethernet SFP. The SNR-S2962-24T supports all the features required to be used at the access level in the corporate network modern and networks of telecom operators.

Access Switches

S2965-8T series

The only switch of the series SNR-S2965-8T. This switch is equipped with the link down Fast Ethernet + Gigabit Ethernet. ports and uplink ports SFP Gigabit Ethernet, and supports all the required features for the application-level access level in the corporate network modern and networks of operators of telecommunications. The model with port RPS, SNR-S2965-8T, allows you to connect a power supply of spare 12 V, and

S225Gi-8T-POE

PoE Switch industrial SNR-S225Gi-8T-POE — a perfect solution to organize the operation of the external equipment for the smart grid. The switch is carried out in an industrial enclosure, is equipped with a fastener to fix on the DIN rail, as well as a passive cooling effective. The basic elements of cutting edge ensures a secure trouble-free operation in a wide temperature range of -40 to +85 ° C. The SNR-S225Gi-8T-POE is characterized by the set of features required for operation in the company

S215Gi-8T-POE

The PoE switch industrial SNR-S215Gi-8T-POE is designed to be used in operating conditions difficult. Model has all the necessary features are available for configuration via a Web interface is simple and convenient. The equipment has a protection IP40, and an extended temperature range (-40 to +85 °C).

S2200G-8T-POE

TSNR-S2200G-8T-POE — PoE Switch smart WEB. It is equipped with a 2-port SFP 100/1000BaseX and 8-port 10/100/1000base-t ports that support PoE IEEE802.3af/at. The PoE support 802.3 at/af on the 8-port allows you to power the devices IP telephone/visual, Wi-Fi points, the thin client form directly to the switch, which reduces the cost of ownership and facilitates the maintenance of the infrastructure ; the Web interface provides information simple and friendly setup of the switch.

Series 1900s

Series ISNR-1900s — Ethernet switches unmanaged designed to organize small networks and their extension. The SFP interfaces are used to connect entities remote ; the metal housing provides protection against exposure to direct physical. The switches in this series are perfectly suited to the implementation of cost - effective solutions for the provision of communication services in buildings of low height. The switches SNR-1900s support the features of insulation ports in copper, which can reduce the traffic distribution in the field of dissemination and reducing the risk of broadcast storms.

Series S1000/ Series S1100G

The series NFS-S1000 and SNR-S1100G are Ethernet switches unmanaged designed to organize and extension of networks in the home and small office networks. Each port copper supports automatic speed Detection and detection duplex and auto mode, MDI/MDI-X. The switches in this series are equipped with a form factor ultra-compact design that expands the possibilities of editing and provide low rates of energy consumption.

Test network multi-protocol

SMART CLASS 4800

Main features

Interfaces Ethernet electrical (10/100/1000) and optical (100M,1 GE).
Automated Tests, and enhanced RFC 2544 and SAMComplete according to ITU-Y. 1564.
Test approach burst-integrated according to the tests of TCP throughput TrueSpeed MEF 34 and RFC 6349.
Compatible with microscopes fiber Viavi and power meters optical.

Applications

Facilities business services, service activation and troubleshooting.
Characterization, validation and troubleshooting and mobile backhaul.

Sync Modules TEM

Main features

Checks the latency of the network delay one-way Ethernet and IP.
Confirms the synchronization of the frequency, phase, and time with a precision close to that of a laboratory on the ground.
Proves the facilities and the defects of the GNSS antenna.
Supports multiple constellations GNSS, including GPS, GLONASS, Beidou, SBAS and QZSS.
Click to select a satellite acquisition quick and accurate, with a GNSS receiver modern to 72 channels.

Test of multi-protocol network

MTS 5800-100G

Main features

TDM/PDH fully loaded to a double-supports Ethernet 10 G, SONET, SDH, Fibre Channel, and OTN.
Automated Tests, and enhanced RFC 2544 and SAMComplete according to ITU-T-Y1564.
Integrated test approach burst according to

the tests of TCP throughput Truespeed MEF 34 and RFC 6349.
Compatible with the modules OTDR and COSA VIAVI 4100 series with Smart Link Mapper, microscopes and fiber meter optical power.
Tests the synchronization and timing with the help of TEM (Timing Expansion Module).

MTS-6000A

Main features

TDM/PDH fully loaded to a double-supports Ethernet 10 G, SONET, SDH, Fibre Channel, and OTN. Automated Tests, and enhanced RFC 2544 and SAMComplete according to ITU-T-Y1564. Integrated test approach burst according to the tests of TCP throughput Truespeed MEF 34 and RFC 6349.
Compatible with the modules OTDR and COSA VIAVI 4100 series with Smart Link Mapper, microscopes and fiber meter optical power.
Tests the synchronization and timing with the help of TEM (Timing Expansion Module).

Test network multi-protocol

T-BERD MTS 5882 handheld tester

Main features

TDM/PDH fully loaded to a double-supports Ethernet 10 G, SONET, SDH, Fibre Channel, and OTN. Automated Tests, and enhanced RFC 2544 and SAMComplete according to ITU-T-Y1564. Integrated test approach burst according to the tests of TCP throughput Truespeed MEF 34 and RFC 6349.
Compatible with the modules OTDR and COSA VIAVI 4100 series with Smart Link Mapper, microscopes and fiber meter optical power.
Tests the synchronization and timing with the help of TEM (Timing Expansion Module).

T-BERD/MTS-6000A

Main features

Platform lightweight at only 2.4 kg /5,3 lbs
The large TFT colour display transréfléchissant 8 inch improves viewing in all conditions.
Intuitive graphical user Interface with touch screen.
Long-lasting battery life thanks to one cell lithium-ion smart.
Fast data transfer via USB, Ethernet port and 1gb extended
GPS Option to certify the contact information

Test Cable

OneExpert CATV

Main features

Duport tm design with PosiScan. Was of VIAVI Exclusive. Ensures proper connection and testing.
Auto Channel Automatically identify the channel plan.
Cloud Enabled via StrataSync to track test results and compliance.
One check dashboard clearly displays summarized results of the entire lineup, including MER/BER in about 60 seconds, with easy identification of faults needing attention.

VSE 1100

Main features

Design Duport™ with PosiScan. An exclusive VIAVI. Provides free and appropriate testing. Channel auto - Identifies automatically the plan of the channel. Cloud enabled via StrataSync to follow the results of the tests, and compliance. A dashboard control shows clearly the summarized results of the entire range, including MER/BER in approximately 60 seconds, with a simple identification of defects requiring attention.

Certification of copper

Certify 10G

Main features

Adapters, permanent link and channel certification to TIA category 5e/6/6A
Labelling and reporting of certification integrated and standards-based.

Applications

Complete Certification of the copper TIA 568/ISO 11801
, TIA-942 - A certification of the center of data

Certify 40G

Main features

Permanent link adapters and channel for the certification TIA category

5e/6/6A and ISO class D/E/EA/F/FA.
Adapters multimode (850/1 300 nm)
and singlemode (1 310/1 550 nm) for the
certification fibre Tier 1
(loss/length/polarity).
MPO adapters, multimode (850 nm)
for the certification and troubleshooting
links and trucks DFO.
Support the inspection probe
at the end of the fiber digital VIAVI
P5000i, leader in the sector.

Certification I1& L2 FO

Smart Class OLTS-85

Main features

Versions dedicated multimode, single-mode
and quad.
Colour touch screen of 3.5 inches.
Measure the length and optical loss
(two fibers at two wavelengths) with
control of polarity.
Consistent with the flow circled.
Automated analysis of the inspection of
fibres success/failure with the microscope
P5000i optional

Smart Class MPOLX

Main features

Measure the length
Measure optical loss at multiple
wavelengths,
Check the polarity of the 12-fiber MPO
Provides testing MPO native directly
on the devices,
light Sources, optical dual -
wavelength
Complaint flux encircled.

Accessories FO

FiberCheck Sidewinder

Main features

Integrated touch-screen
to See the services termination of fibre
Centre-auto
Pan auto
integrated Analysis of the end face
of the fiber
Sounds sound for the results of Success/
Failure
free Wi-fi and USB to a PC or
mobile device

FiberCheck Microscope

Main features

Measure the length.
Measure optical loss at multiple
wavelengths.
Check the polarity of the 12-fiber MPO.
Provides testing MPO native directly
on the devices.
Light Sources optical dual -
wavelength.
Complaint flux encircled.

Pen optical

Main features

Compact and ergonomic design for extreme portability,
visible wavelength : 650 nm
Laser at high power (1 mW) for single-mode fibers (> 7 km) and multi-mode (> 5 km)
Emission in continuous mode or flashing
Interface connector, universal, for an easy connection and quick
2.5 mm Adapter as standard (adapter 1.25 mm also available)
Includes a soft carry case with hook belt

Clamp traffic

Main features

System SafeChek easy to operate, ensuring a commitment reproducible of all types of cable optical
tip of the clamp to traffic accepts various cable diameters (buffered fibers , 250 µm to 3 mm)
Adapters from the photometer metal resistant (2.5 and 1.25 mm)
, Measuring both the absolute power (dBm) and relative (dB)
Stores and retrieves up to 100 measurements of power

Garters optical

Garter optical multimode duplex

LC/LC

LC/SC

LC/FC

SC/SC

FC/FC

FC/SC

OM2

OM3

OM4

Discover the excellence of our garters optical multimode duplex, jewelry connectivity designed and made with passion by our expert team. Our catalog offers a full range of solutions, offering unrivalled flexibility to meet your specific needs. Choose from a variety of connectors and cables, customizable according to your preferences. For us the personalization goes beyond the standard, because we understand that each project is unique. You have total control over the length of the garter, we are committed to providing tailor-made solutions to ensure connectivity without compromise.

Garters optical

Garter-optic single-mode simplex/duplex

LC/LC

LC/SC

LC/FC

SC/SC

FC/FC

FC/SC

LC/ST

SC/ST

LC-SC/APC

SC/APC-SC/APC

SX/UPC-SC/APC

Discover the excellence of our garters optical single-mode , jewelry connectivity designed and made with passion by our expert team. Our catalog offers a full range of solutions, offering unrivalled flexibility to meet your specific needs. Choose from a variety of connectors and cables(simplex or duplex), customizable according to your preferences. With us, the personalization goes beyond the standard, because we understand that each project is unique. You have total control over the length of the garter, we are committed to provide customized solutions to ensure connectivity without compromise.

